

## UWE Profile

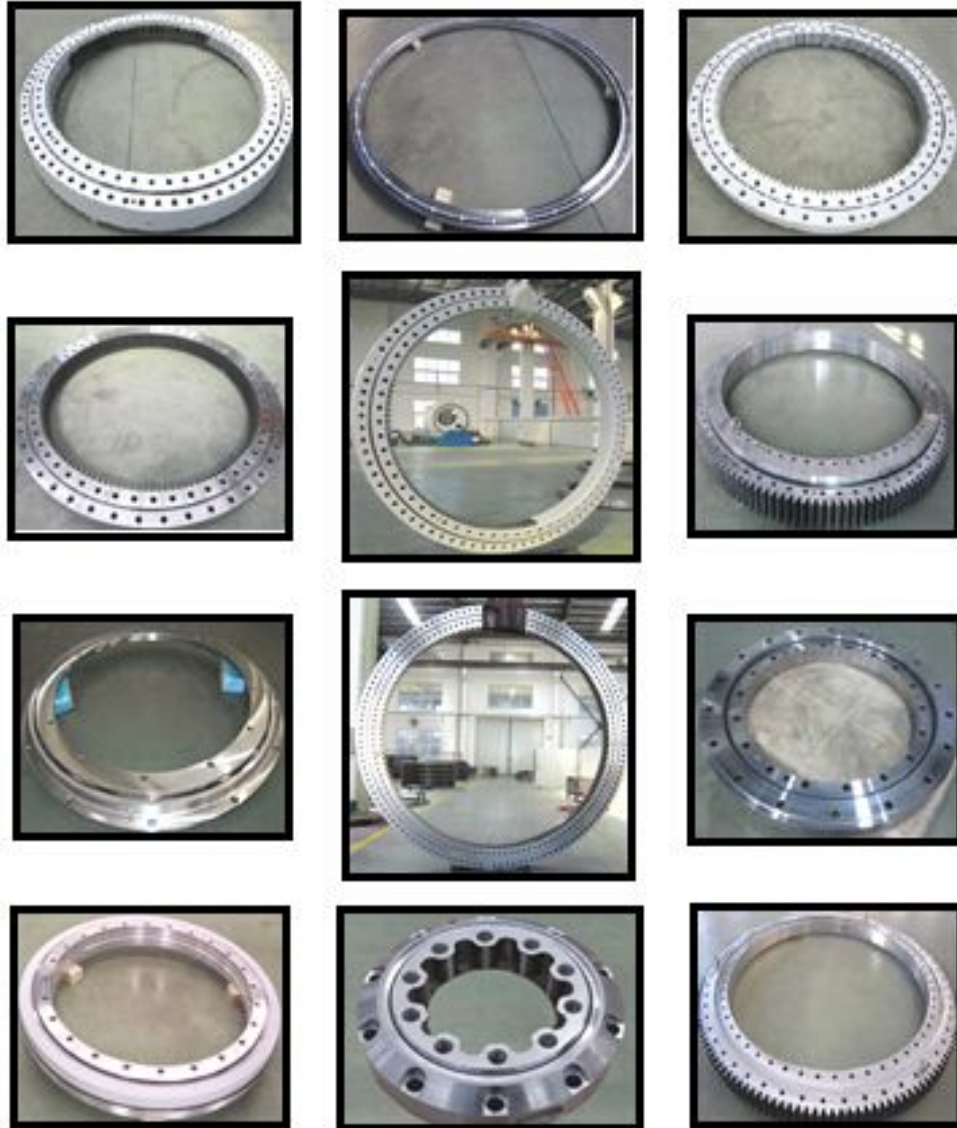
Dalian United Wind Power Generation Bearing Co., Ltd.(UWE bearing),registered trade mark 'UWE', is located in Xijiao industry park of Wafangdian,covers an area of 50,000 square meters. With a registered capital of 20 million Yuan (RMB).over 100 employees.

UWE bearing is a professional scientific research, design and manufacturing enterprise with a strong research,design and management group,adopting advanced foreign wind power bearing production technology combined with independent research and development. UWE bearing passed the ISO9001-2008 quality system certification and ISO14001-2004 environment system certification, and received 13 national patents, has become one of the green clean energy enterprises which priority supported by the national and local government.



Management department, marketing department, technology department, manufacturing department, quality department, financial department and a production base support UWE,with a set of equipment of CNC turning, grinding processing equipment, CNC heat treatment equipment and an independent physical and chemical metrology laboratory. Computerized management system covering all business operations, highly competitive to modern technological and commercial challenges in UWE.

## Product Images



### Wind turbine slewing rings

1. Blade bearing/pitch bearing
2. Yaw bearing
3. Main shaft bearing

### General slewing bearings

1. Single row four point contact ball slewing bearing
2. Single row cross roller slewing bearing
3. Double row different ball diameter slewing bearing
4. Double row four point contact ball slewing bearing
5. Three row roller slewing bearing
6. Ball and roller combined slewing bearing

### Wire race bearings

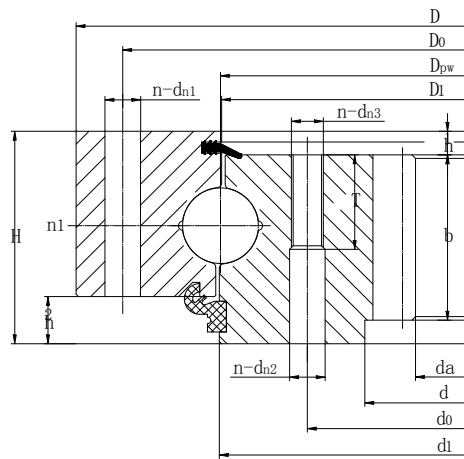
1. Wire race ball bearing
2. Wire race roller bearing

## Applications



UWE slewing bearings are widely applied to wind turbines, yaw, pitch system, container crane, tower crane, port crane, grab crane, ship crane, metal crane, ladle turret, excavator, dredge, shield machine, grams make, metallurgical cranes, ladle turret, excavators, dredgers, shield machine, loading and unloading ships, stacker-reclaimer, filling machines, CT machine, standing wave treatment instrument, tank and other military equipments. Characterized by its high precision, long service life and high reliability, UWE bearing not only meet the domestic market demand, but also exported to overseas markets such as Europe and the United States.

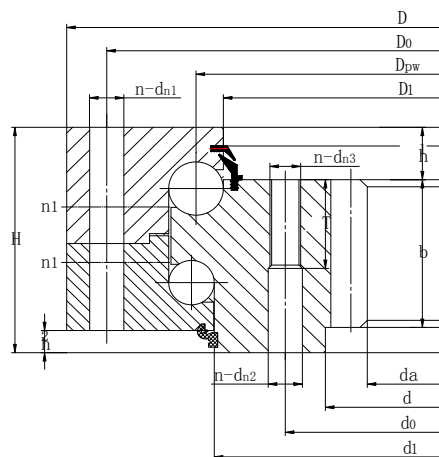
Single row four point contact ball slewing bearing(internal teeth)



Bearing No.	Structure dimensions								weight
	D	d	H	D <sub>1</sub>	d <sub>1</sub>	h <sub>1</sub>	h <sub>2</sub>	n <sub>1</sub>	kg
C.013.25.800	920	692	85	799	801	10	20	6	137
C.013.25.900	1020	792	85	899	901			6	157
C.013.25.1000	1120	892	85	999	1001			6	175
C.013.25.1120	1240	1012	85	1119	1121			6	206
C.013.30.1250	1378	1128	95	1248	1251			8	283
C.013.30.1300	1428	1178	95	1298	1301	10	20	8	297
C.013.30.1400	1528	1278	95	1398	1401			8	324
C.013.30.1600	1728	1478	95	1598	1601			8	383
C.013.30.1700	1828	1578	95	1698	1701			8	411
C.013.30.1800	1928	1678	95	1798	1801			8	439
C.013.40.1700	1840	1560	115	1698	1701	10	20	10	574
C.013.40.1800	1940	1660	115	1798	1801			10	617
C.013.40.1900	2040	1760	115	1898	1901			10	661
C.013.40.2000	2140	1860	117	1998	2001	12	20	8	753
C.013.40.2120	2260	1980	117	2118	2121			8	766
C.013.40.2240	2380	2100	117	2238	2241	12	20	8	840
C.013.50.2000	2170	1830	137	1998	2002			8	998
C.013.50.2120	2290	1950	137	2118	2122			8	1060
C.013.50.2240	2410	2070	137	2238	2242			8	1121
C.013.50.2500	2670	2330	137	2498	2502			10	1380
C.013.50.2800	2970	2630	137	2798	2802	12	20	10	1437
C.013.50.3150	3320	2980	137	3148	3152			10	1800
C.013.60.2800	2978	2622	157	2798	2832			10	1913
C.013.60.3150	3328	2972	157	3148	3152			10	2003
C.013.60.3550	3728	3372	157	3548	3552			10	2263
C.013.60.4000	4178	3822	157	4998	4002			10	2570

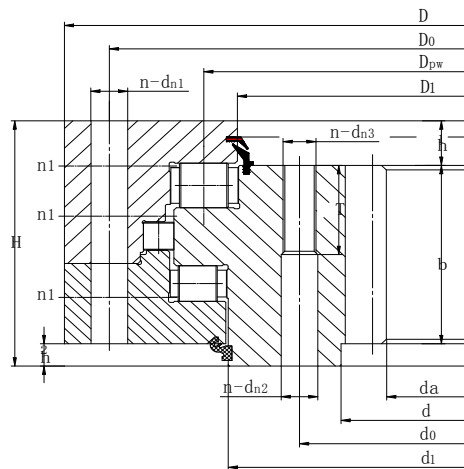


**Double row different ball diameter slewing bearing(internal teeth)**



Bearing No.	Structure dimensions								Weight
	D	d	H	D <sub>1</sub>	d <sub>1</sub>	h <sub>1</sub>	h <sub>2</sub>	n <sub>1</sub>	kg
C.023.30.1800	1940	1650	134	1771	1777	29	20	8	768
C.023.30.1900	2040	1750	134	1871	1877	29		8	822
C.023.40.2000	2155	1832	170	1964	1965	39		8	1320
C.023.40.2300	2455	2132	170	2264	2265	39		8	1417
C.023.40.2500	2655	2332	170	2464	2465	39		10	1550
C.023.50.2500	2676	2312	198	2462	2465	47		10	2035
C.023.50.2800	2976	2612	198	2762	2765	47	20	8	2272
C.023.50.3000	3176	2812	198	2962	2965	47		8	2368
C.023.50.3150	3326	2962	198	3112	3115	47		10	2582
C.023.60.3000	3218	2784	234	2952	2954	56		10	3470
C.023.60.3150	3368	2934	234	3012	3104	56		10	3964
C.023.60.3550	3768	3334	234	3502	3504	56		10	4130

**Three row roller slewing bearing(internal teeth)**



Bearing No.	Structure dimensions								Weight
	D	d	H	D <sub>1</sub>	d <sub>1</sub>	h <sub>1</sub>	h <sub>2</sub>	n <sub>1</sub>	kg
C.133.25.1800	1970	1640	158	1763	1774	30	20	8	1045
C.133.25.1900	2070	1740	158	1863	1874	30		8	1120
C.133.25.2000	2170	1840	158	1963	1974	30		10	1170
C.133.25.2500	2670	2340	158	2463	2474	30		10	1540
C.133.32.2500	2697	2318	192	2459	2470	42		8	1880
C.133.32.2800	2997	2618	192	2759	2770	42	20	8	2362
C.133.32.3000	3197	2818	192	2959	2970	42		10	2505
C.133.32.3150	3347	2968	192	3109	3120	42		10	2588
C.133.40.3150	3384	2942	230	3100	3113	50		10	3593
C.133.40.3550	3784	3342	230	3500	3513	50		10	4127
C.133.40.4000	4234	3792	230	3950	3963	50	20	12	4528
C.133.50.4000	4262	3752	278	3940	3954	65		12	6359
C.133.50.4250	4512	4002	278	4190	4204	65		12	6636
C.133.50.4500	4752	4252	278	4440	4454	65		12	6957